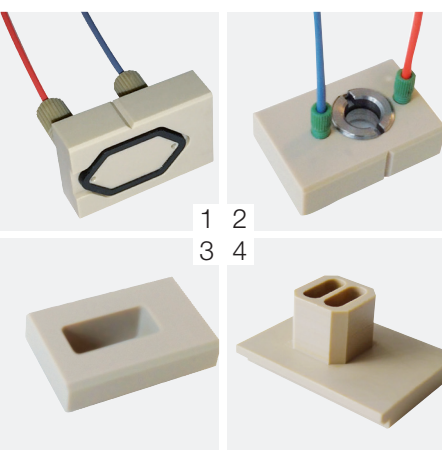


# Get The Most Out of Your Instrument



## Simplicity and Flexibility Combined

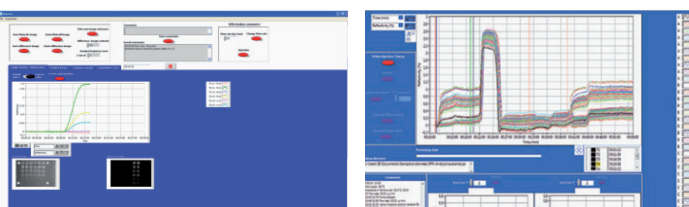
OpenPlex can work with different optional flow cells to give you more flexibility. These accessories can be used to work in a static mode (no flow) or to combine SPRI with other techniques such as Fluorescence or Electrochemistry.

- 1: Standard Flow Cell for SPRI measurements
- 2: Window Flow Cell for fiber-optic coupling with Raman or fluorescence
- 3: Cuvette Cell for static measurements or in combination with electrochemistry
- 4: 2-Cavity Cell for static measurements

## SPRI Software Suite

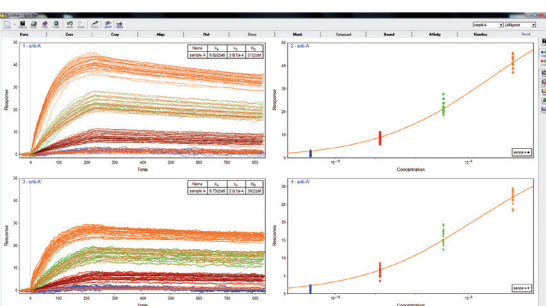
The powerful software suite of OpenPlex allows you to acquire data, analyze results and generate reports automatically. It consists of:

- **SPRI-View:** Intuitive instrument control software for ease-of-use that guides you through all the different steps of the measurement
- **SPRI-Analysis:** Quantitative and report analysis to track all your experiments
- **ScrubberGen (optional):** Advanced analysis to fit data and determine kinetic parameters



Snapshot of SPRI-View

Snapshot of SPRI-Analysis



Snapshot of ScrubberGen

- Different fluidic cell configurations
- Coupling with other techniques
- Quick data analysis
- Instant data reporting
- Affinity determination

## Contact Us

France: Tel: +33 (0)1 69 74 72 00  
 USA: Tel: +1 732 494 8660  
 Japan: Tel: +81-(75) 313 8123  
 Germany: Tel: +49 (0)6251 8475-0  
 UK: Tel: +44 (0)20 8204 8142  
 Italy: Tel: +39 2 5760 3050  
 China: Tel: +86 (0)21 6289 6060  
 Brazil: Tel: +55 11 2923 5400  
 Other: Tel: +33 (0)1 69 74 72 00

[www.horiba.com/spri](http://www.horiba.com/spri)  
[info.sci@horiba.com](mailto:info.sci@horiba.com)

## Follow Us

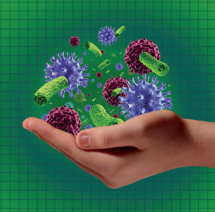
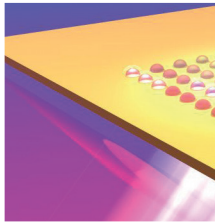

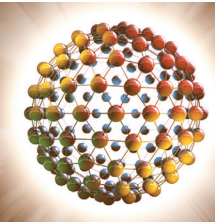


# Discover the Label-Free Platform From HORIBA Scientific



# OpenPlex

Multiplex Label-Free Interaction Analysis

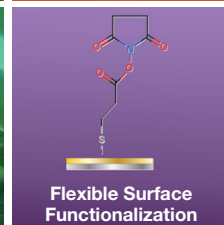
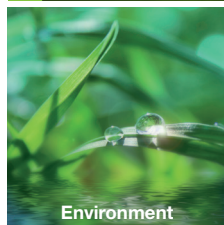
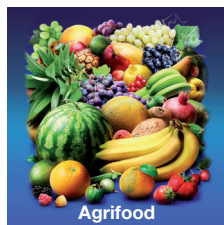
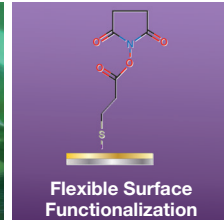
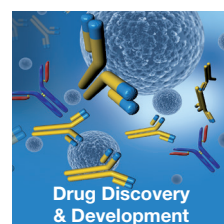





## Open Research Platform



*"We are able to generate consistent results that enable us to identify full binding coefficients for multiple candidate aptamer sequences simultaneously. The instrument [...] has become one of the most essential tools that we have."*

Dr. G. Penner, NeoVentures Biotechnologies, Canada



Explore the future

Automotive Test Systems | Process & Environmental | Medical | Semiconductor | Scientific



Explore the future

Automotive Test Systems | Process & Environmental | Medical | Semiconductor | Scientific



This document is not contractually binding under any circumstances - Printed in France - ©HORIBA Jobin Yvon 03/2016

# OpenPlex



## Get information about:

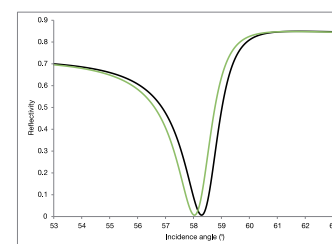
- Kinetics
- Affinity
- Specificity
- Concentration
- Relative binding

# Open Research Platform for Fast and Easy Kinetic Interaction Monitoring

## Information-Rich Technology to Characterize Molecular Interactions

OpenPlex uses Surface Plasmon Resonance imaging (SPRi) to follow label-free binding events in real time.

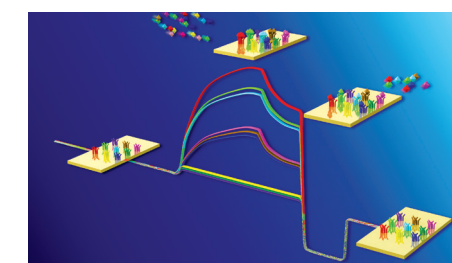
SPR **measures modifications of the refractive index** located at the surface of a sensor chip, which can be correlated to mass variations. Binding events create local changes of the refractive index, and therefore changes of reflectivity ( $\Delta R$ ) of the incident light at a fixed angle. Thanks to the imaging capability, multiple interactions can be monitored simultaneously.



Plasmon Curves

## Multiplexing: Performance & Speed Combined

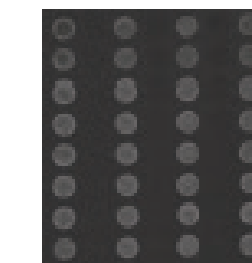
The imaging configuration of OpenPlex dramatically enhances the throughput of conventional SPR. Ligands molecules are immobilized in an array format onto the sensor chip surface and are screened against the interacting partner in the sample solution.



Kinetic Curves

## Instant Information From Real Time Display of Images

Binding events are followed in real time on the kinetic curve (sensorgram) and also on the SPRi difference image. White areas on the SPRi difference image correspond to areas where binding has occurred – giving a clear Yes/No answer to molecule detection.



SPRi difference image of the sensor chip after interaction

OpenPlex is the ideal solution for the development of label-free multiplexed bioassays and biomolecules detection. It uses Surface Plasmon Resonance imaging to track the real time binding of molecules on multiple spotted areas located on a sensor chip.

## Experiments Only Limited by Your Imagination

OpenPlex is ideally suited for applications in biosensor development, pathogen detection, water monitoring, nanotechnology and surface characterization.

## Flexible

OpenPlex is a cost-effective solution without compromise. It combines the throughput of SPR imaging with the versatility of an open configuration. **Different flow cell accessories** are available, and easily interchangeable to broaden your research areas.

## Easy to Use

OpenPlex is a **fully manual** instrument and is simple to operate. It can be easily used in laboratory classes to introduce SPR imaging to students.

## Robust

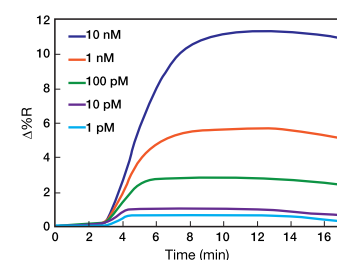
Microfluidics-free liquid handling based on PEEK tubes allows **the analysis of concentrated or complex samples**, such as cells, bacteria, serum or plasma – No risk of blocking the fluidics system.

## Powerful Software

OpenPlex is delivered with an intuitive SPRi software suite that can be used from measurement acquisition to analysis of the results and **instant data reporting** exported into Word or Excel files.

## Biosensor Development - Biomolecule Detection

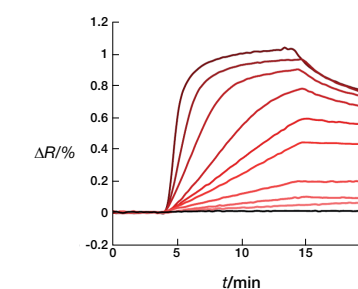
Gold nanostructures or quantum dots can increase OpenPlex sensitivity for detecting biomolecules. Here, the combination of nanotechnologies and SPRi allows the detection of bacterial RNA (picomolar concentrations).



Detection of 16srRNA from *Legionella pneumophila* using quantum-dot enhancement  
Courtesy of Maryam Tabrizian, McGill University, Canada

## Binding Analysis

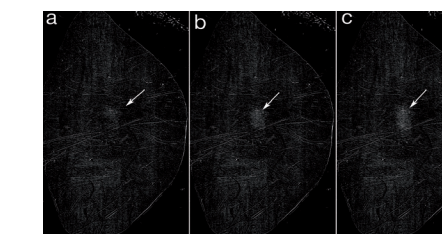
OpenPlex can measure affinity and kinetic rates involving various types of biomolecules including DNA, RNA, proteins, peptides, antibodies, oligosaccharides, and more.



Sensorgrams obtained for various concentrations of a protein binding to its aptamer immobilized on the sensor chip.  
Courtesy of Yoann Roupioz, CEA Grenoble, France

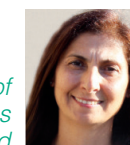
## Biofilm Dynamics Monitoring

The unique imaging capability of SPRi brings you the image function so **you can see** in real time any modification occurring on the sensor chip surface. For example, biofilms dynamics can be analyzed from different surface coatings simultaneously.



Images of *E. coli* biofilm formation taken at (a) 405 min; (b) 409 min; (c) 420 min  
Courtesy of Ed Goluch, Northeastern University, USA

"...an essential tool [...] for the characterization of sophisticated ultrasensitive diagnostic platforms integrated with either nanomaterials, modified gold nanostructures or microfluidics"  
Prof. Maryam Tabrizian, McGill University, Canada



"The accessibility of the hardware and the flexibility of the software [...] allow us to stretch the limits of what can be studied with SPRi. We have been able to modify the flow cell to study bacterial cells and biofilms in unique geometries."  
Dr. E. D. Goluch, Northeastern University, USA

